



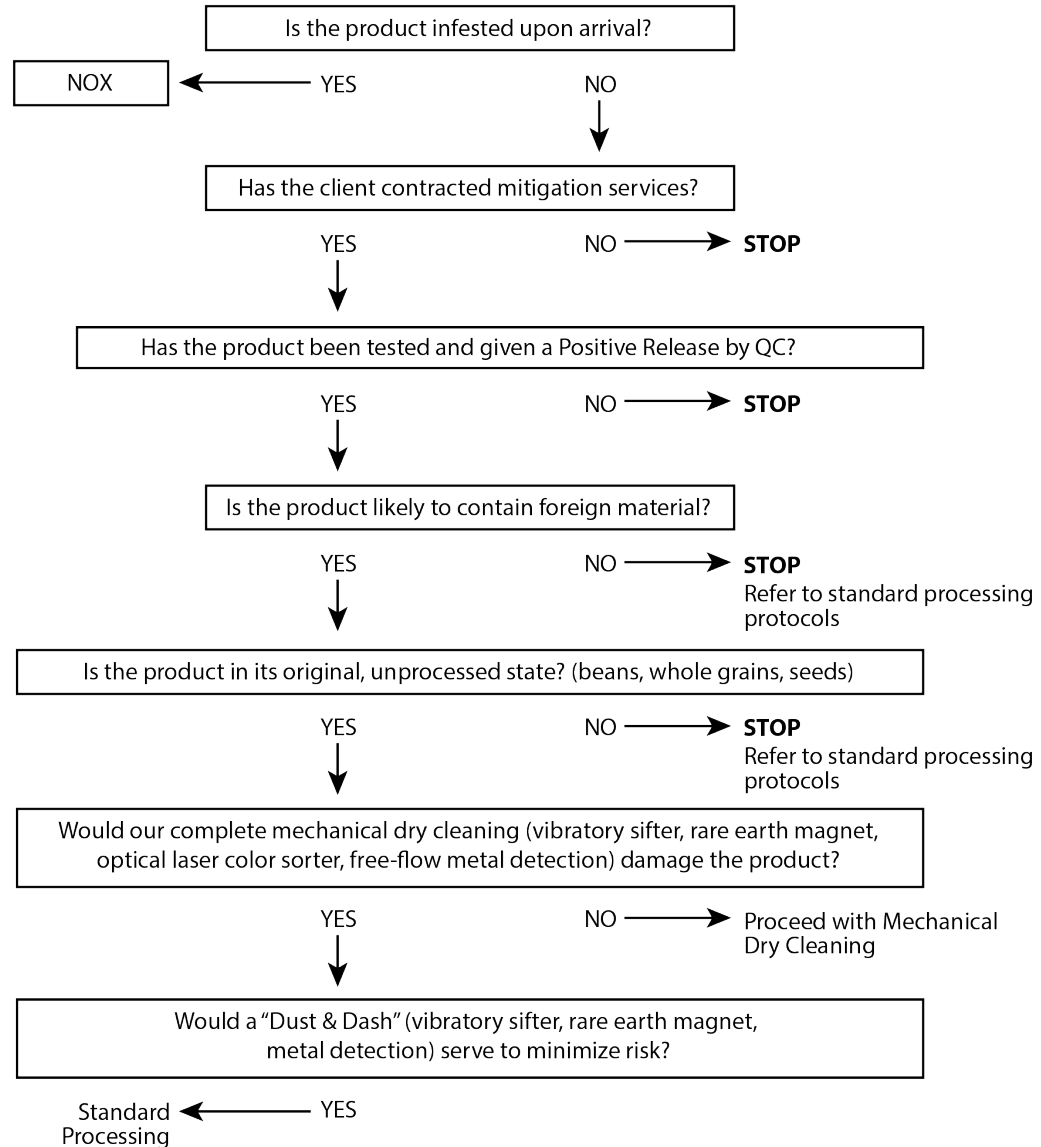
531 GETTY COURT, SUITE C
 BENICIA, CALIFORNIA 94510

P: 707-590-7010
 F: 510-263-5778



RISK MANAGEMENT PROCESS DECISION TREE		
Effective Date: 05/20/18	Revision Date: 11/15/20	Review Date: 11/02/20

How to determine if a product needs to undergo the Process Controls



ALL FINISHED PRODUCTS MUST UNDERGO METAL DETECTION

As determined, our General Guidelines for Standard Processing Protocols are the following:

- Whole Grains — Complete Processing
- Milled Grains (Cereals, Oat Products, Flours, Corn Meal, Crumbs) — Finished Product Metal Detection
- Beans — Complete Processing, Lentils to undergo processing twice
- Seeds — Complete Processing
- Pasta — Dust & Dash
- Salts — Dust & Dash

